



IMI PBM

Tank Outlet Valves

PROVEN SOLUTIONS ENGINEERED FOR DEMANDING APPLICATIONS

- **ANGLE STEM FLUSH TANK VALVES**
- **RADIAL DIAPHRAGM TANK VALVES**
- **RADIUS MOUNTED VALVES**
- **FLUSH TANK VALVES WITH CROWN FLATS**
- **SPRAY BALL VALVES**
- **SAMPLING VALVES**





TANK BOTTOM VALVES

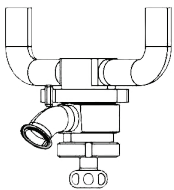
keep media flowing

IGENIX® RADIAL DIAPHRAGM TANK OUTLET VALVES

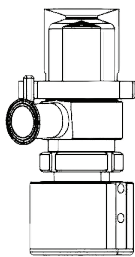
- Smooth sloping design for complete drainage
- ½" through 3", DIN 15 through DIN 80
- 45° outlet, clamp and weld connections available
- 316L weld pads are stocked for immediate shipment
- Machined by PBM from wrought material
- Standard finish 15 Ra with EP (BPE SF4)



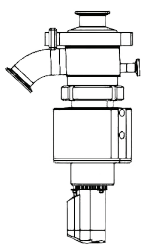
RDV CONFIGURATIONS



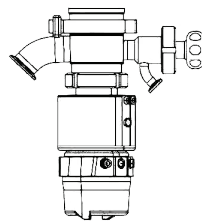
Point of Use



Extended
Weld Pad



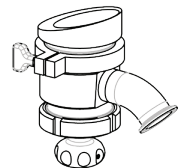
Clamp On
with Purge
Port



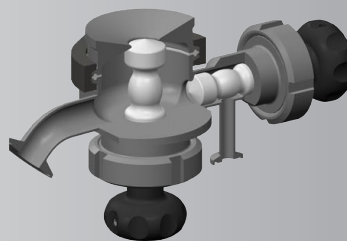
Standard Weld
Pad with
Satellite Valve



Tangential



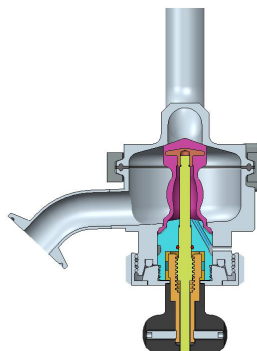
RDV with Satellite Valve for CIP/SIP



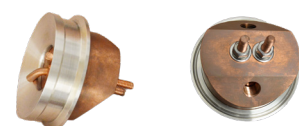
New Polymer RDV



Point of Use Valves

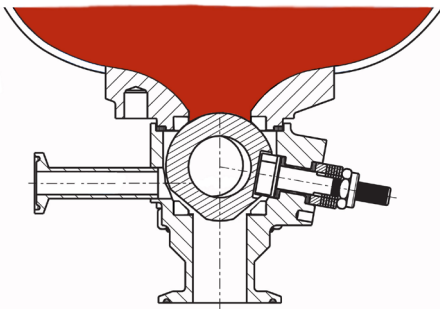


Custom fit Copper Chill Block fixtures are available to facilitate welding of PBM's Radial Diaphragm tank outlet valve weld pad.

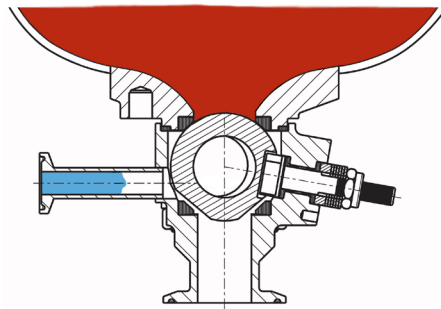


PBM's Tank Bottom Valves:

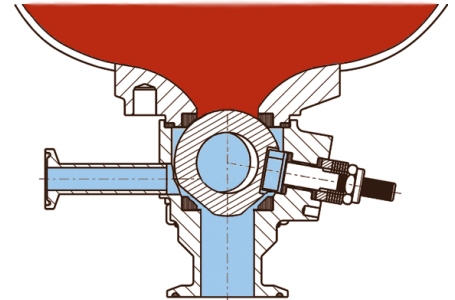
- Eliminate dead leg at bottom of the tank
- Have unobstructed flow to empty the tank quickly
- Seals on the upstream seat to allow body cavity to drain or be purged and cleaned
- Standard flush pad design will fit most tank configurations



Clean, purge valve in closed position.



Steam or cleaning solution goes in purge port.



Solution then goes around body and down through flats.



INDUSTRIAL VALVES

FULL PORT

- Angle Stem Flush Tank
- Flush Tank
- Control Valves

SANITARY VALVES

BPE COMPLIANT

- Radial Diaphragm Valves
- Angle Stem Flush Tank
- Flush Tank Ball Valves
- Control Valves

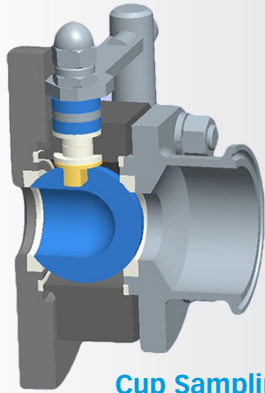
SPECIALTY VALVES

- Manifold Assemblies
- Crown Flat Face
- Spray Ball Valves
- Sampling Valves

AUTOMATION

- Electric & Pneumatic
- Direct Mount
- Torque outputs of 25,000 in-lbs.
- Bi-Directional Travel Adjustments
- Pneumatic and Electro-Pneumatic positioners

IMI PBM's standard flush tank pad incorporates a unique radius that facilitates flow to the valve and reduces dead space where media could stagnate. The pad is designed to weld flush with the inside tank surface for strategic positioning of the ball. PBM's standard flush tank pad will fit most tank configurations, such as dished, flat, ellipsoidal, jacketed, conical or spherical.



Cup Sampling Valve

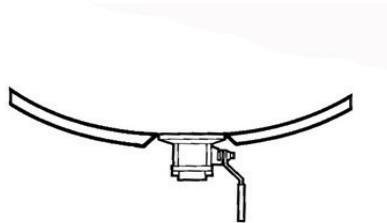
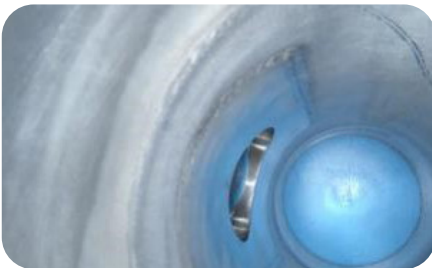


Cylindrical Radius Pad Sampling Valve



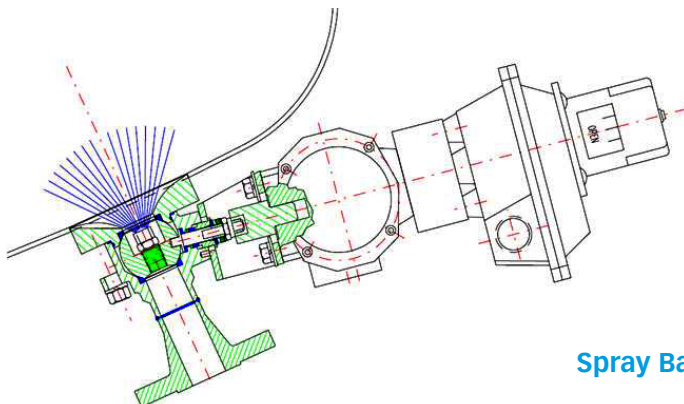
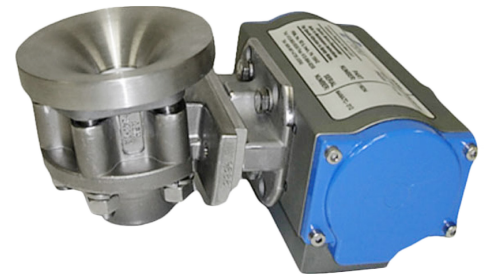
Sanitary Flush Tank Valve

Cylindrical radius pads or reduced pocket cylindrical radius pads keep media flowing smoothly by minimizing dead space.



Spherical radius pads or reduced pocket spherical radius pads facilitate efficient drainage and reduces the pocket area above the ball.

Industrial Angle Stem Valve



Spray Ball Valves

